

# **PLAYQUIP LEISURE**

## **PLAY AREA INSPECTION REPORT**

**THIS REPORT HAS BEEN COMPILED IN ACCORDANCE WITH  
BSEN 1176:2008 - PLAYGROUND EQUIPMENT  
BSEN 1177:2008 - IMPACT ABSORBING PLAYGROUND SURFACING.**

**FOR:  
Holbrook Parish Council  
Recreation Ground Play Area  
Reade Road, Holbrook**

**2<sup>nd</sup> October 2024**

**Name of inspector: Mr Peter Sander  
RPII registration No. OP5108**

**Telephone: 01206 825869  
Email: [info@playquip.co.uk](mailto:info@playquip.co.uk)**



Unit 4, Heath Industrial Estate  
Cockaynes Lane  
Alresford  
Essex, CO7 8DA  
Tel: (01206 825869)  
[Info@playquip.co.uk](mailto:Info@playquip.co.uk)

*Innovation ●*  
*Design ●*  
*Consultation ●*  
*Manufacture ●*  
*Installation ●*  
*Maintenance ●*  
*Inspection ●*

## **INSPECTION GUIDANCE NOTES**

**Rev: 3**  
**April 2013**

These notes form an important part of the inspection report and provide essential information when assessing the need for remedial action on any item listed.

The equipment detailed in this report has been assessed in line with the following EN standard:  
BSEN 1176: 2008 revision for Playground Equipment.  
BSEN 15312: Sports Areas.  
BSEN 14974: Wheeled Sport.

BSEN 1176 replaced the previous British Standard on 1<sup>st</sup> January 1999, the new BSEN 1176 standard was then revised in 2008. Due to the changes and revisions of the standards some equipment manufactured and installed before these dates may now fail, this does not mean these items have become dangerous overnight nor does it mean consideration for remedial work or replacement is necessary.

Generally, equipment compliant to a previous recognised standard is considered safe subject to normal maintenance requirements and general wear and tear.

Where there is a compliance failure due to these facts a risk assessment will be made, if in our opinion no reduction of risk would be achieved by remedial work or alterations a "Low risk no action required" comment will be added.

Any low risk item should be monitored by the equipment owner/provider and if accidents occur remedial action should be taken; this judgement must lay with the owner/provider as the playground inspector may not have the relevant information to enable an informed judgement.

Please note there is no such thing as NO RISK, even new fully compliant equipment will carry an element of risk for the user, these along with non-compliant items will be assessed annually and information will be provided in the reports regarding any remedial action required.

---

Manufacture, installation and maintenance of all types of play equipment and safety surfacing

Playquip U.K. Ltd trading as Playquip Leisure Company Reg No. 2826786 VAT No: 623 1660 67

Safety inspection reports indicate the condition of the equipment at the time of the inspection, subsequent events may affect the integrity and safety of the equipment therefore regular checks should be made by the owner/provided between annual inspections.

This safety inspection has been carried out without dismantling or destruction of the equipment; if dismantling or excavation is considered necessary to assess the integrity of the equipment, we will suggest this action in the report.

We are happy to provide the skilled operatives required to carry out this work and will provide detailed quotations for this service if required.

In respect to safety surfacing, we can only assess compliance to the BSEN dimensional requirements relating to each piece of equipment, impact absorbency tests are available subject to quotation if required.

The risk assessments detailed in this report have three basic levels, Low, Medium and High, generally low risk items require only monitoring, medium risk items should be repaired as soon as practicably possible during normal maintenance procedures, high risk items require urgent attention and should be made safe or put out of action until repairs are completed.

For guidance on maintenance and repairs we have a numerical rating system, this provided a better visualisation of the urgency relating to remedial work detailed in the report.

Very low risk 1 – 3 no action required  
Low risk 4 – 7 monitor for deterioration  
Medium risk 8 – 12 repair as soon as practicable possible  
High risk 13 – 20 repairs to be undertaken as soon as possible  
Unacceptable high risk 21+ item to be put out of action immediately and made safe until repairs are complete.

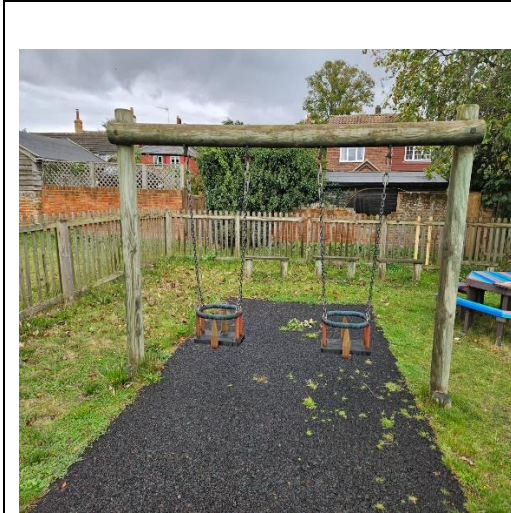
These scores are calculated on the likely hood of an accident occurring and the severity of the accident.

Equipment Manufacturer: Unknown

Equipment Standard:  
**EN 1176 Compliance**

Risk Level

Risk Score



<p>This item meets the requirements of EN 1176 where this may be tested on site without dismantling or destruction.</p>	<p>low</p>	<p>6</p>
---	------------	----------

Surfacing Standard:  
**EN 1176 Compliance**

Risk Level

Risk Score

<p>The surfacing meets the dimensional recommendations of EN 1176.</p>	<p>Low</p>	<p>6</p>
--	------------	----------

Date of manufacture

Unknown

Recommendations & Evaluations:

**1.8m high wooden cradle swing.**

- Small support post splitting and delaminating
- 1 top bolt cover damaged
- Grass and weeds have self-seeded into the bonded mulch

**Risk score 6 = Low risk**  
**Risk score 5 = Low risk**  
**Risk score 9 = Medium risk**



If grass and weeds are left untreated in bonded mulch it can irreparably damage the surfacing  
Advise treating with suitable weed control products.

Equipment Manufacturer: 2020

Equipment Standard:

Risk Level

Risk Score



These items meet the requirements of EN 1176	Low	6
--	-----	---

Surfacing Standard:

Risk Level

Risk Score

The surfacing meets the dimensional recommendations of EN 1176.	low	6
---	-----	---

Date of Manufacture:

Playquip Leisure

Recommendations & Evaluations:

4 Gym Items

Rower, Arm & Pedal Cycle, Double Bench Press, Cross Country Skier.



- Weeds growing in bonded mulch **Risk score 9 = Medium risk**
- All items in good order with no work required at this point.

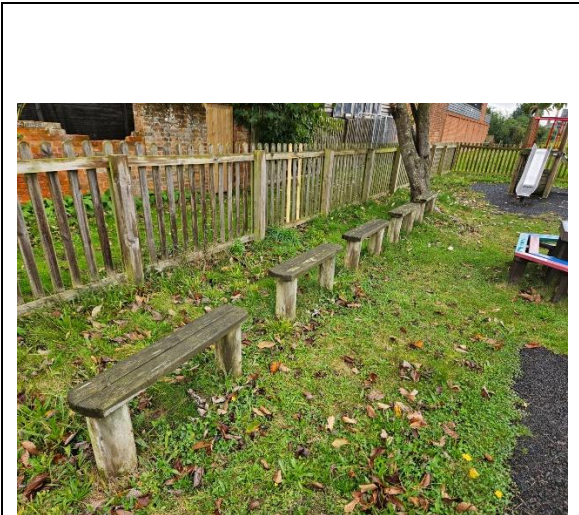
If grass and weeds are left untreated in bonded mulch it can irreparably damage the surfacing  
Advise treating with suitable weed control products.

Equipment Manufacturer: Unknown

Equipment Standard:

Risk Level

Risk Score



This item meets the requirements of EN 1176 where this may be tested on site without dismantling or destruction.	Low	7
--	-----	---

Surfacing Standard:

Risk Level

Risk Score

The surfacing meets the dimensional recommendations of EN 1176.	Low	6
---	-----	---

Date of Manufacture:

Unknown

Recommendations & Evaluations:

**5 x bench seats**

- Seats positioned close together encouraging climbing.
- Splits and on-set of decay to tops and ends of seats

**Risk score 7 = Low risk**  
**Risk score 4 = low risk**

Equipment Manufacturer: Action play & Leisure

Equipment Standard:

Risk Level

Risk Score



This item meets the requirements of EN 1176 where this may be tested on site without dismantling or destruction.	Low	6
--	-----	---

Surfacing Standard:

Risk Level

Risk Score

The surfacing meets the dimensional recommendations of EN 1176.	Low	6
---	-----	---

Date of Manufacture:

Unknown

Recommendations & Evaluations:

**Wooden multi play unit**

- Non-compliant gap at gable end of roof
- Weeds and grass growing in bonded mulch

**Risk score 4 = Low risk**  
**Risk score 9 = Medium risk**



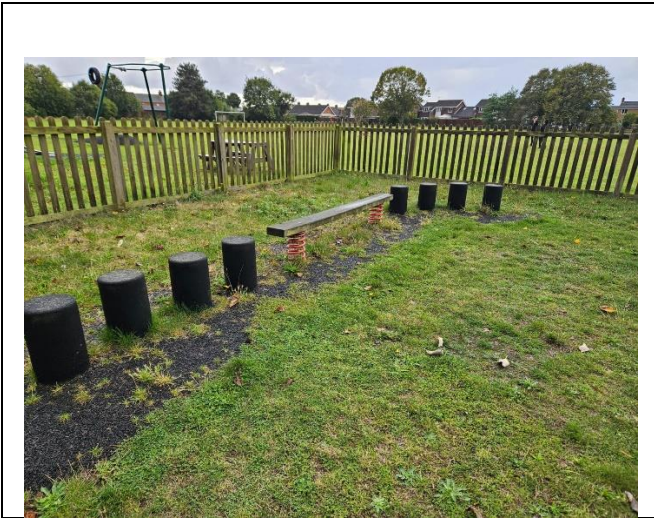
If grass and weeds are left untreated in bonded mulch it can irreparably damage the surfacing  
 Advise treating with suitable weed control products.

Equipment Manufacturer: Unknown

Equipment Standard:

Risk Level

Risk Score



This item meets the requirements of EN 1176 where this may be tested on site without dismantling or destruction.	Low	7
--	-----	---

Surfacing Standard:

Risk Level

Risk Score

The surfacing meets the dimensional recommendations of EN 1176.	low	6
---	-----	---

Date of Manufacture:

Unknown

Recommendations & Evaluations:

**Step posts and wobble board**

- Excessive weed growth in surface
- Moss and algae on post tops making them slippery

**Risk score 9 = Medium risk**  
**Risk score 8 = Medium risk**



If grass and weeds are left untreated in bonded mulch it can irreparably damage the surfacing  
 Advise treating with suitable weed control products.

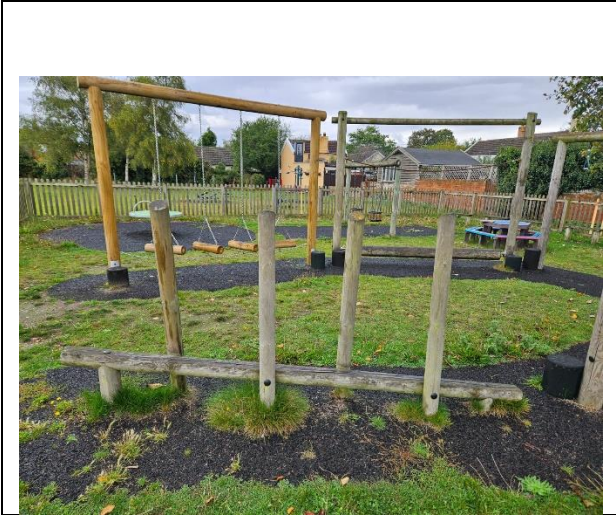


Equipment Manufacturer: Unknown

Equipment Standard:

Risk Level

Risk Score



This item meets the requirements of EN 1176 where this may be tested on site without dismantling or destruction.

low

7

Surfacing Standard:

Risk Level

Risk Score

The surfacing meets the dimensional recommendations of EN 1176.

low

6

Date of Manufacture:

unknown

Recommendations & Evaluations:

**Weave balance beam and step post**

- Slight splits/shakes in wood
- Grass growing in new surfacing
- Decay in top of balance beam

**Risk score 4 = low risk**

**Risk score 9 = Medium risk**

**Risk score 7 = Low risk**



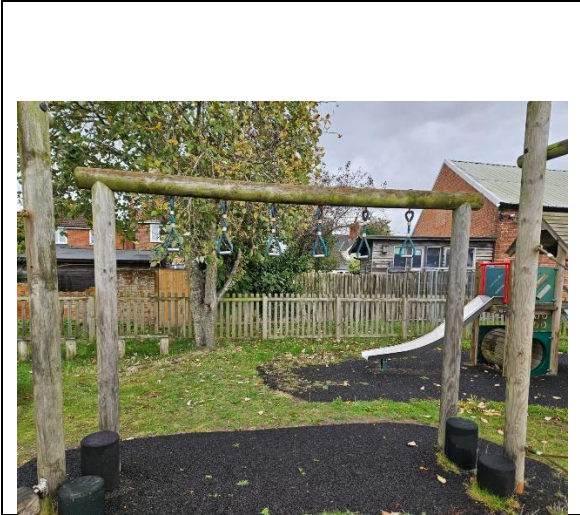
If grass and weeds are left untreated in bonded mulch it can irreparably damage the surfacing  
Advise treating with suitable weed control products.

Equipment Manufacturer: Unknown

Equipment Standard:

Risk Level

Risk Score



<p>This item meets the requirements of EN 1176 where this may be tested on site without dismantling or destruction.</p>	<p>Low</p>	<p>7</p>
---	------------	----------

Surfacing Standard:

Risk Level

Risk Score

<p>The surfacing meets the dimensional recommendations of EN 1176.</p>	<p>Low</p>	<p>6</p>
--	------------	----------

Date of Manufacture:

Unknown

Recommendations & Evaluations:

**Trapeze rings**

- Slight splits/shakes in wood
- Grass growing in new surface
- Trapeze rings loose in cross bar
- Trapeze ring ropes delaminating
- Significant bow in crossbar but no rot visible
- Large amount of weed growth in surfacing

- Risk score 4 = low risk**
- Risk score 4 = low risk**
- Risk score 6 = low risk**
- Risk score 6 = low risk**
- Risk score 3 = low risk**
- Risk score 9 = Medium risk**



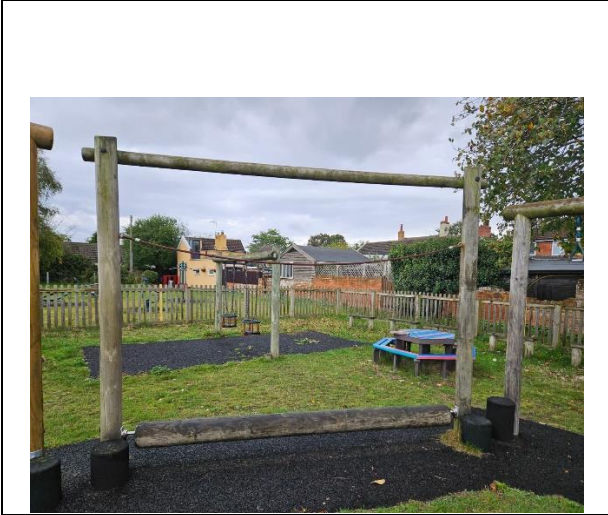
If grass and weeds are left untreated in bonded mulch it can irreparably damage the surfacing  
Advise treating with suitable weed control products.

Equipment Manufacturer: unknown

Equipment Standard:

Risk Level

Risk Score



This item fails to meet the requirements of EN 1176	Medium	9
---	--------	---

Surfacing Standard:

Risk Level

Risk Score

The surfacing fails to meet the dimensional recommendations of EN 1176.	Low	6
---	-----	---

Date of Manufacture:

Unknown

Recommendations & Evaluations:

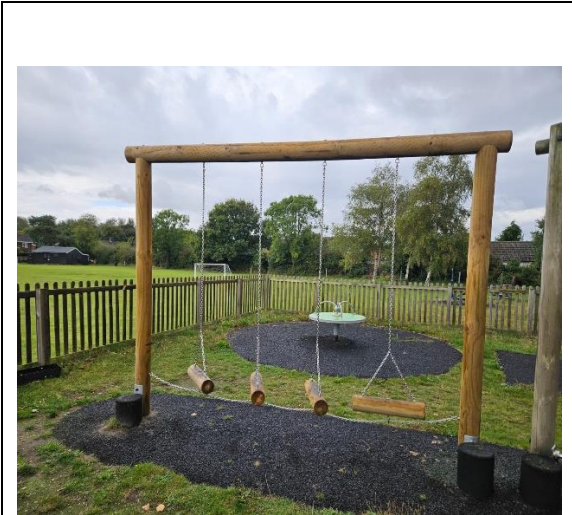
**Spinning balance log**

- Fixing bolt very loose and protruding **Risk score 10 = Medium risk**
- Splits in spinning log **Risk score 4 = Low risk**
- Weeds growing in surface **Risk score 9 = Medium risk**



If grass and weeds are left untreated in bonded mulch it can irreparably damage the surfacing  
Advise treating with suitable weed control products.

Equipment Manufacturer: Unknown



Equipment Standard:

Risk Level

Risk Score

This item meets the requirements of EN 1176 where this may be tested on site without dismantling or destruction.	Low	7
--	-----	---

Surfacing Standard:

Risk Level

Risk Score

The surfacing meets the dimensional recommendations of EN 1176.	Low	6
---	-----	---

Date of Manufacture:

Unknown

Recommendations & Evaluations:

**Swinging step log**

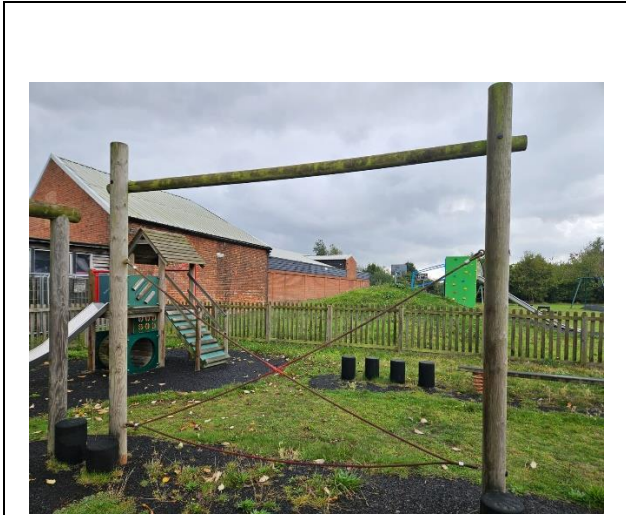
- This item is in good order.

Equipment Manufacturer: Unknown

Equipment Standard:

Risk Level

Risk Score



This item meets the requirements of EN 1176 where this may be tested on site without dismantling or destruction.

Low

7

Surfacing Standard:

Risk Level

Risk Score

The surfacing meets the dimensional recommendations of EN 1176.

Low

6

Date of Manufacture:

Unknown

Recommendations & Evaluations:

**Swinging step log**

- Cross rope badly worn showing steel braid
- Post loose in ground
- Large shakes/splits in wood
- Large amount of weeds growing in bonded mulch

**Risk score 5 = Low risk**

**Risk score 7 = Low risk**

**Risk score 6 = Low risk**

**Risk score 9 = Medium risk**



If grass and weeds are left untreated in bonded mulch it can irreparably damage the surfacing  
Advise treating with suitable weed control products.

Equipment Manufacturer: Playquip Leisure

Equipment Standard:

Risk Level

Risk Score



This item meets the requirements of EN 1176 where this may be tested on site without dismantling or destruction.	Low	7
--	-----	---

Surfacing Standard:

Risk Level

Risk Score

The surfacing meets the dimensional recommendations of EN 1176.	Low	4
---	-----	---

Date of Manufacture:

2020

Recommendations & Evaluations:

**Mini Whirl**

- Bolt cover cap missing
- Bolt has been fitted incorrectly protruding thread below deck.
- Large amount of weed growth in surfacing

**Risk score 6 = Low risk**  
**Risk score 12 = Medium Risk**  
**Risk score 9 = Medium risk**



If grass and weeds are left untreated in bonded mulch it can irreparably damage the surfacing  
 Advise treating with suitable weed control products.

Equipment Manufacturer: Playquip



Equipment Standard: Risk Level Risk Score

This item meets the requirements of EN 1176 where it can be inspected on site without dismantling or destruction.	Low	6
---	-----	---

Surfacing Standard: Risk Level Risk Score

The surfacing meet the dimensional recommendations of EN 1176.	Low	4
--	-----	---

Date of Manufacture:

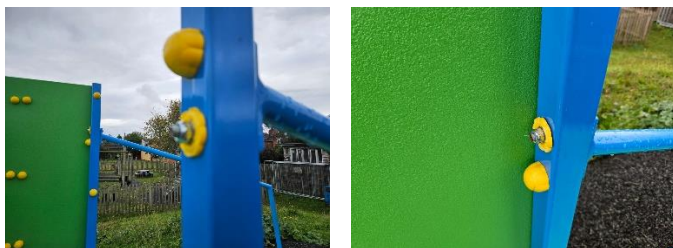
2023

Recommendations & Evaluations:

**Mound slide and platform**

- 2 bolt covers have been broken on tower entrance

**Risk score 6 = Low risk**



Equipment Manufacturer: Playquip Leisure



Equipment Standard: Risk Level Risk Score

This item meets the requirements of EN 1176 where this may be tested on site without dismantling or destruction.	Medium	8
--	--------	---

Surfacing Standard: Risk Level Risk Score

The surfacing meets the dimensional recommendations of EN 1176.	Low	5
---	-----	---

Date of Manufacture:

2020

Recommendations & Evaluations:

**Aerial runway**

- Tyre buffer needs to be moved to ensure correct space at end of travel. **Risk score 5 = Low risk**



It is recommended that the cable is periodically taken down to inspect it for damage where it passes through the framework.

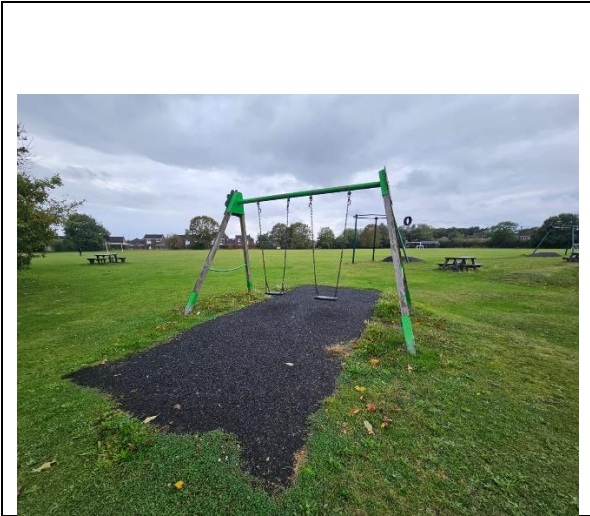


Equipment Manufacturer: Unknown

Equipment Standard:

Risk Level

Risk Score



This item meets the requirements of EN 1176 where this may be tested on site without dismantling or destruction.

Low

7

Surfacing Standard:

Risk Level

Risk Score

The surfacing meets the dimensional recommendations of EN 1176.

Low

5

Date of Manufacture:

Unknown

Recommendations & Evaluations:

**Junior swing**

- Finger traps between wooden legs and steel feet
- Excessive bolt threads exposed on crossbar side panels
- Excessive bolt thread exposed on lower leg

**Risk score 7 = Low risk**

**Risk score 4 = Low risk**

**Risk score 9 = Medium Risk**

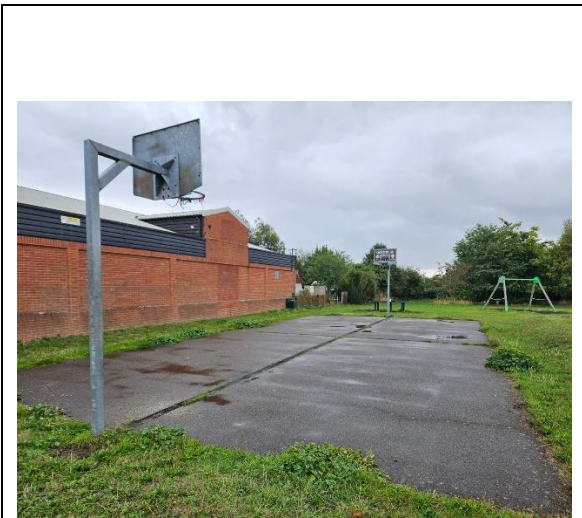


Equipment Manufacturer: Unknown

Equipment Standard:

Risk Level

Risk Score



This item meets the requirements of EN 15312 where this may be tested on site without dismantling or destruction.	Low	7
---	-----	---

Surfacing Standard:

Risk Level

Risk Score

The surfacing fails to meet the recommendations of EN 1176.	Medium	9
---	--------	---

Date of Manufacture:

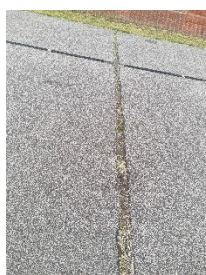
Unknown

Recommendations & Evaluations:

**Basketball pitch**

- Rubber inserts to tarmac surface failing creating trip hazards
- Some raising of tarmac to edge adjacent goal
- Both nets on basketball rings are damaged

**Risk score 9 = Medium risk**  
**Risk score 7 = Low risk**  
**Risk score 7 = Low risk**



Equipment Manufacturer: Playquip Leisure

Equipment Standard:

Risk Level

Risk Score



This item meets the requirements of EN 1176 where this may be tested on site without dismantling or destruction.	Low	3
--	-----	---

Surfacing Standard:

Risk Level

Risk Score

The surfacing meets the dimensional recommendations of EN 1176.	Low	3
---	-----	---

Date of Manufacture:

2020

**Recommendations & Evaluations:**

**Ping-pong table**

Large amount of weed growth in surface  
Line tape damaged on tabletop

**Risk score 9 = Medium risk**  
**Risk score 4 = Low risk**



If grass and weeds are left untreated in bonded mulch it can irreparably damage the surfacing  
Advise treating with suitable weed control products.

## **Notices, Signs & Ancillary Items**

The play area is situated within a large open recreation ground and accessed via gated entrances at the perimeter of the field.



Both gates operate correctly.

### **Fencing installed around the play area.**



The fencing is in very poor condition with one broken top rail and broken or missing fence slats, there are 8 loose or rotten posts and the second leaf gate at the entrance is not supported as the post is rotten.

**Risk score 10 = Medium risk**

The position of the gate creates an entrapment, gapes of 12mm should be maintained around all gates. The lockable section has a broken latch.

## Litter bins



The green bin is very loose in the ground and can easily be pushed over

## Bench seat

The bench seat behind the swings has rough edges advise sanding smooth.



The picnic table shown above was in the fence area, it has not been assembled fully and needs to be completed with additional screws

## Risk Score 7 Low Risk



The picnic table is in good order

**THE WEEDS GROWING IN THE SURFACING ARE DEEPLY ROOTING INTO THE SURFACE, DO NOT PULL THEM OUT AS IT WILL DAMAGE THE SURFACING, TREAT THEM WITH A SUITABLE WEED KILLER TO PREVENT FURTHER DAMAGE.**

---

End of report